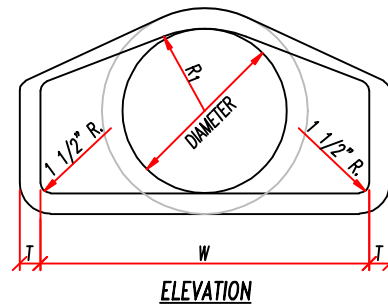
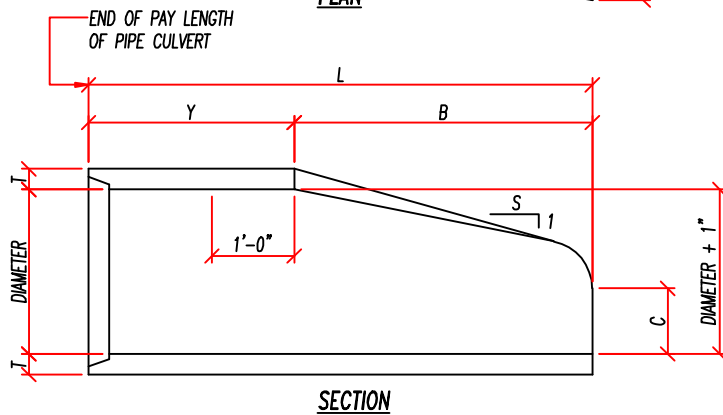
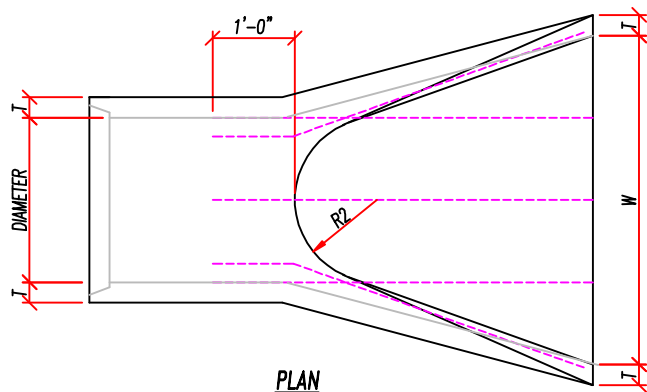
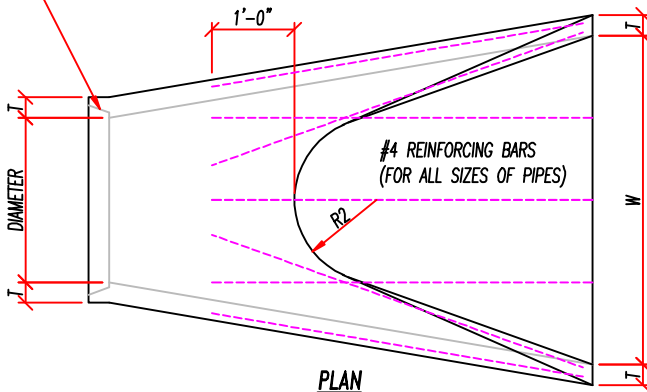


FLARED END SECTIONS

DIA. OF PIPE	L ± 6"	B	Y ± 4 1/2"	C	W ± 2"	R ₁	R ₂	S APPROX.	T MIN.
12"	6'-0 7/8"	2'-0"	4'-0 7/8"	4"	2'-0"	1'-0 1/8"	9"	3	2"
15"	6'-1"	2'-3"	3'-10"	6"	2'-6"	1'-0 1/2"	11"	3	2 1/4"
18"	6'-1"	2'-3"	3'-10"	9"	3'-0"	1'-3 1/2"	1'-0"	3	2 1/2"
24"	6'-1 1/2"	3'-7 1/2"	2'-6"	9 1/2"	4'-0"	1'-4 13/16"	1'-2"	3	3"
30"	6'-1 3/4"	4'-6"	1'-7 3/4"	1'-0"	5'-0"	1'-6 1/2"	1'-3"	3	3 1/2"
36"	8'-1 3/4"	5'-3"	2'-10 3/4"	1'-3"	6'-0"	2'-0 5/16"	1'-8"	3	4"
42"	8'-2"	5'-3"	2'-11"	1'-9"	6'-6"	2'-3 1/2"	1'-10"	3	4 1/2"
48"	8'-2"	6'-0"	2'-2"	2'-0"	7'-0"	2'-4 1/2"	1'-10"	3	5"
54"	8'-4"	5'-5"	2'-11"	2'-3"	7'-6"	2'-9 1/8"	2'-0"	2.4	5 1/2"
60"	8'-3"	5'-0"	3'-3"	2'-6"	8'-0"	3'-0 11/16"	2'-0"	3	6"
66"	8'-3"	6'-6"	1'-9"	2'-6"	9'-0"	3'-0 1/8"	2'-0"	3	6 1/2"
72"	8'-3"	6'-6"	1'-9"	2'-6"	9'-0"	3'-2 15/16"	2'-0"	3	7"

GROOVE END ON OUTLET END SECTION
 TONGUE END ON INLET END SECTION
 (TYPICAL FOR ALL CONCRETE FLARED END SECTIONS)




NOTES:

CONCRETE FOR FLARED END SECTIONS SHALL BE IN ACCORDANCE WITH APPLICABLE REQUIREMENTS OF A.A.S.H.T.O. DESIGNATION M170, M206, AND M207 FOR CLASS II PIPE

REINFORCEMENT ON THE "Y" SECTION SHALL BE IN ACCORDANCE WITH APPLICABLE REQUIREMENTS OF A.A.S.H.T.O. DESIGNATION M170, M206, AND M207 FOR CLASS II PIPE

IN ADDITION TO THE REINFORCING BARS SHOWN, REINFORCEMENT IN THE "B" SECTION SHALL HAVE A CROSS SECTIONAL AREA EQUAL TO THAT OF ONE LAYER OF STEEL IN THE "Y" SECTION.



PANHANDLE CONCRETE PRODUCTS

2202 WEST OVERLAND
 SCOTTSBLUFF, NE 69361
 PH: (308) 632-2161
 FAX: (308) 632-2771